

# FireWav™

## Audio Setup Guide

The FireWav installer automatically sets the Windows audio settings to match the FireWav requirements.

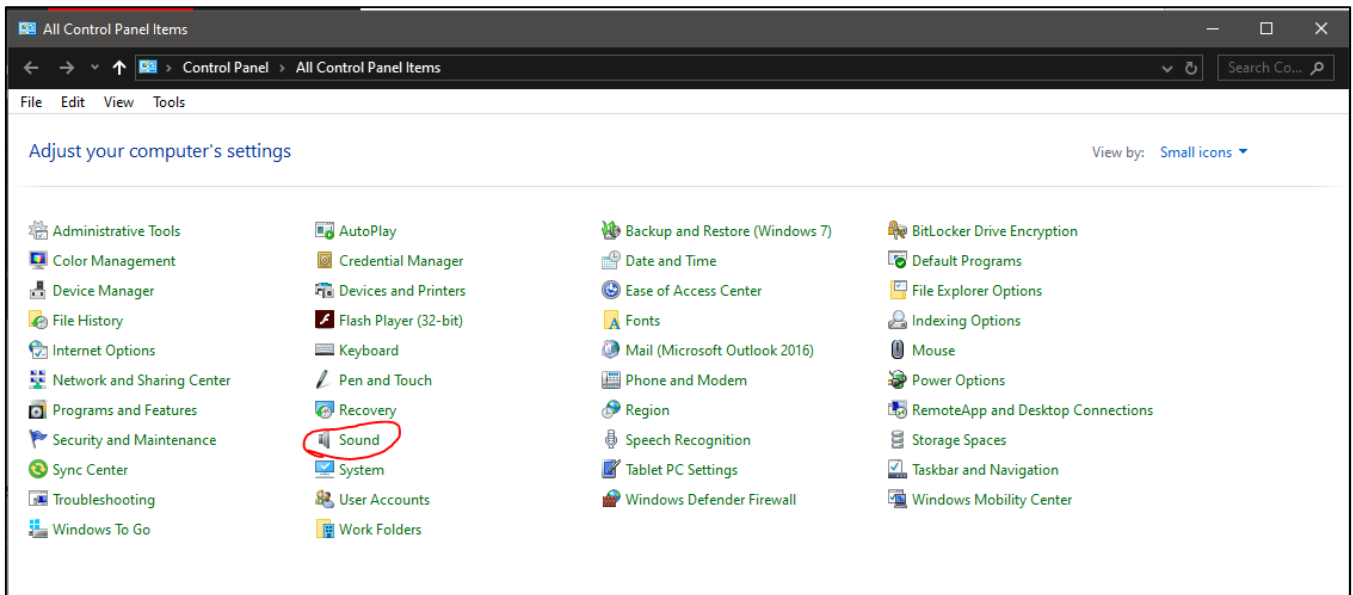
However, there may be times when you want to change the default audio driver, do A-B listening comparisons between FireWav and your default system audio driver, or correct the driver settings in the event they are reset by other applications or computer malfunctions.

The audio settings are always available to be changed to suite your needs, BUT for FireWav to work correctly, the settings must be set to **“16 bit, 48000 Hz (DVD Quality)”** for **BOTH** the FireWav audio driver (Mixlr) and the system default audio driver, and for **BOTH Playback AND Recording devices**.

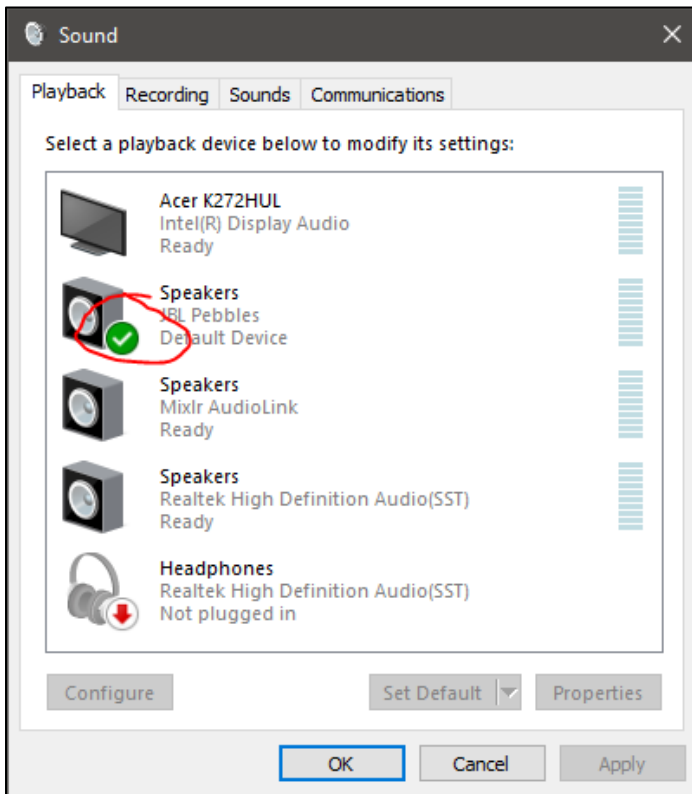
The following instructions show the steps to set the audio settings:

1. Use the Windows Audio Sound Control Panel for your setup. For this to work, each audio device on your PC needs to be set to the same sample rate and bit depth.

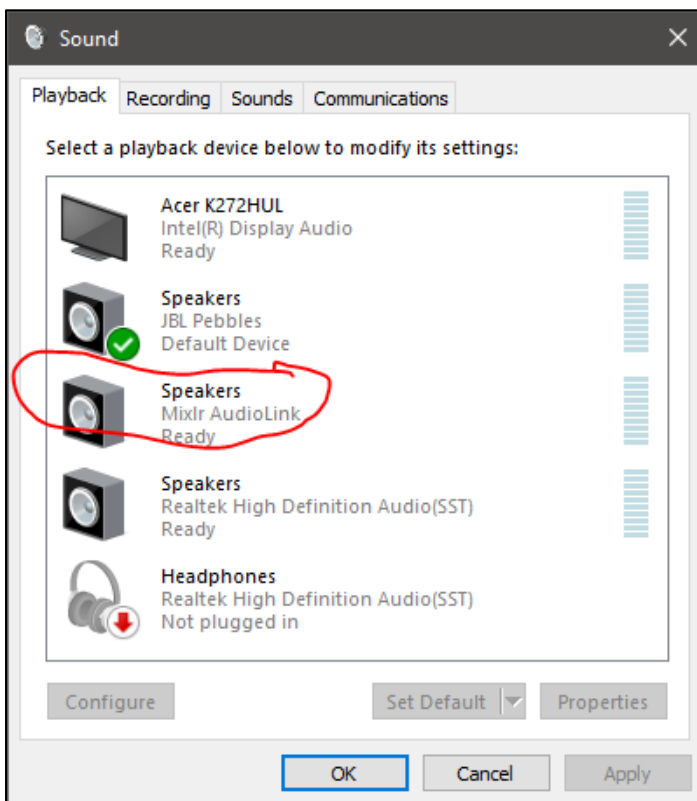
Start by opening the Windows **“Control Panel”** and selecting **“Sound”** to open the Sound Control Panel.



- The **Sound Control Panel** will reveal the playback AND recording device tabs. Begin with the **Playback** device tab. The active (default) sound device will have a green check box next to the name of the device.

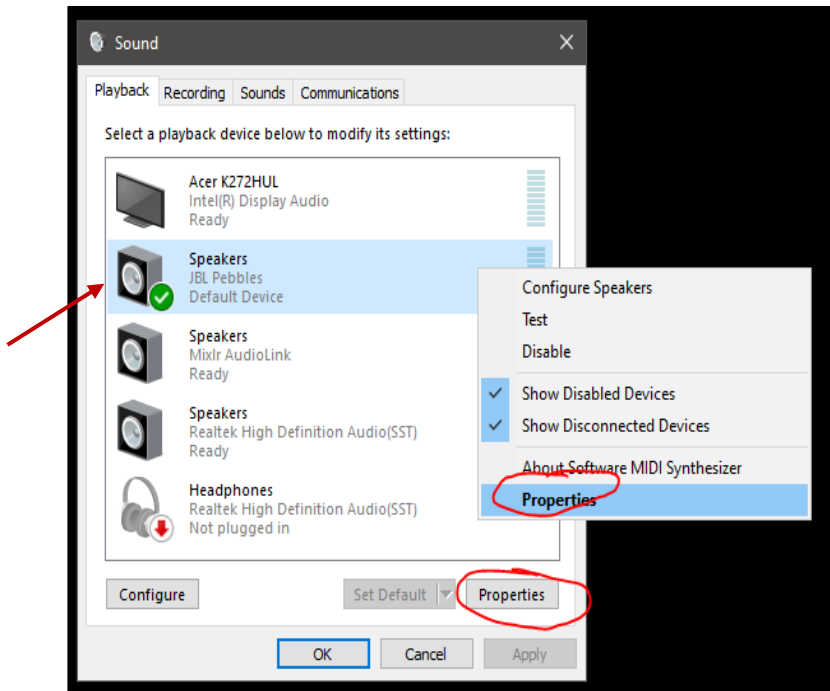


- You will also see a new audio device called **"Mixlr AudioLink"**. This is the FireWav sound driver.

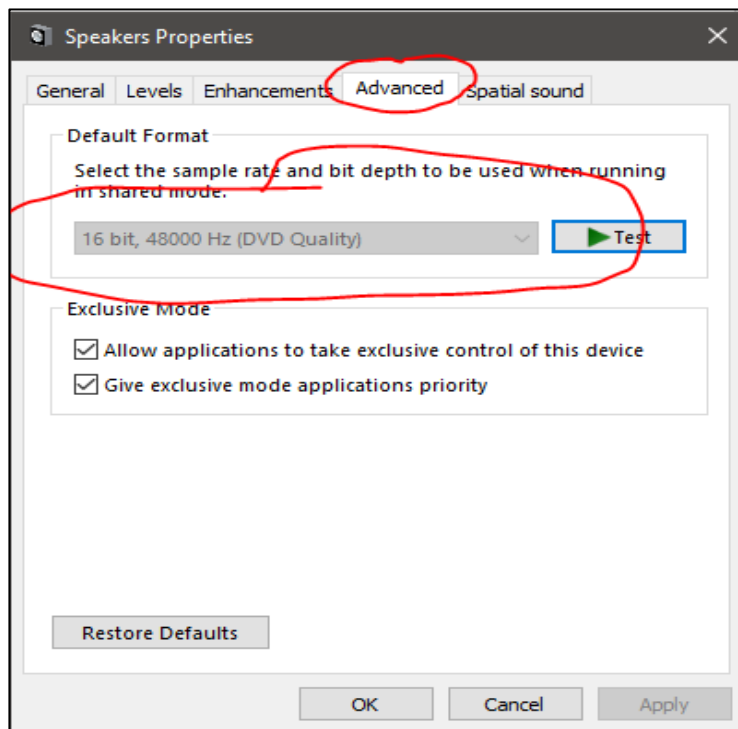


- The **sample rate** must be set to the same setting for BOTH the sound device with the green check mark next to it AND the new device called **Mixlr AudioLink**.

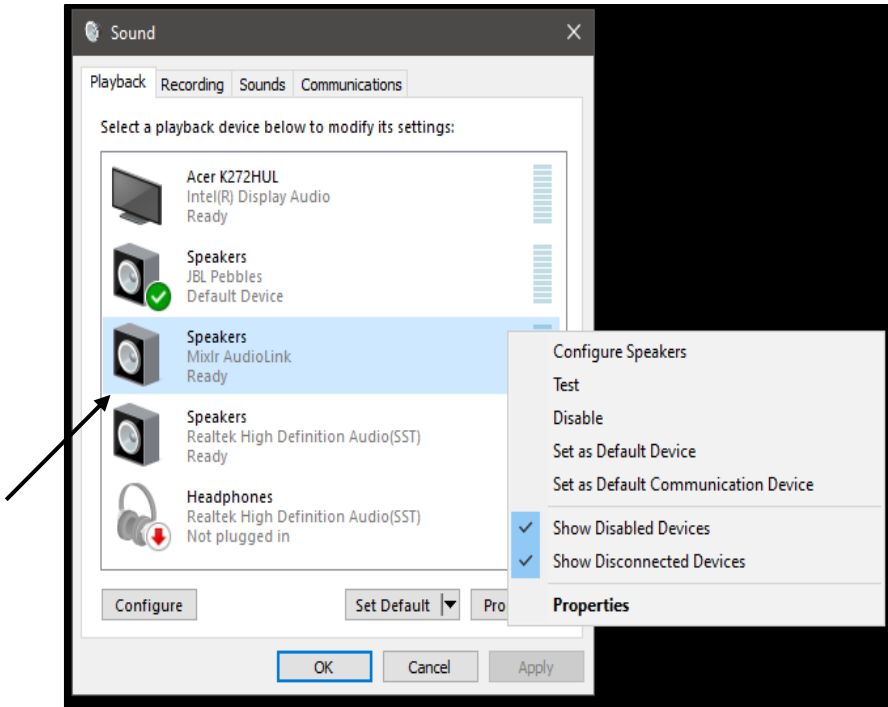
Right click on the sound card with the green check box and select “Properties” or highlight the device and click the properties button below.



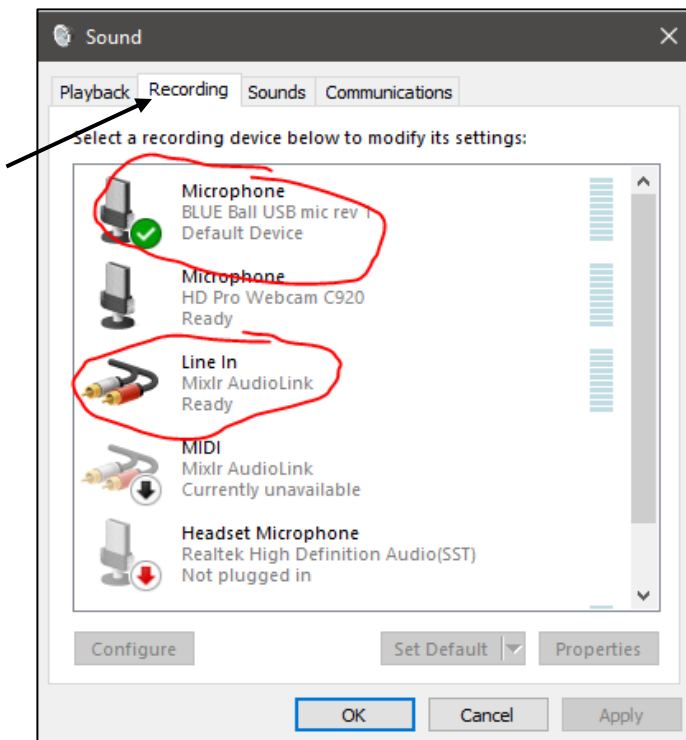
- In the properties window, select the “Advanced” tab. From the list of available sample rates and bit depths, select “16 bit, 48000 Hz (DVD Quality)”.



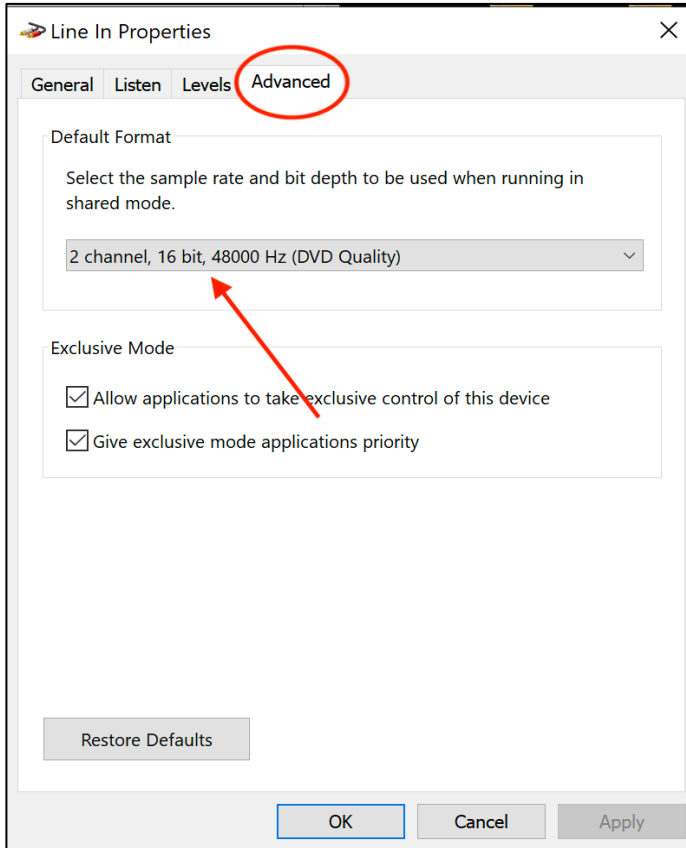
- Click OK and repeat the same steps for the sound card driver called Mixlr AudioLink, setting the driver to “16 bit, 48000 Hz (DVD Quality)”.



- Now that the playback devices are set to the same sample rate and bit depth, the Recording devices need to be matched. Go to the sound control panel window and select the **Recording** tab. Once again, the active device will be indicated by a green check box and a NEW recording device called Line In – Mixlr AudioLink will be listed.



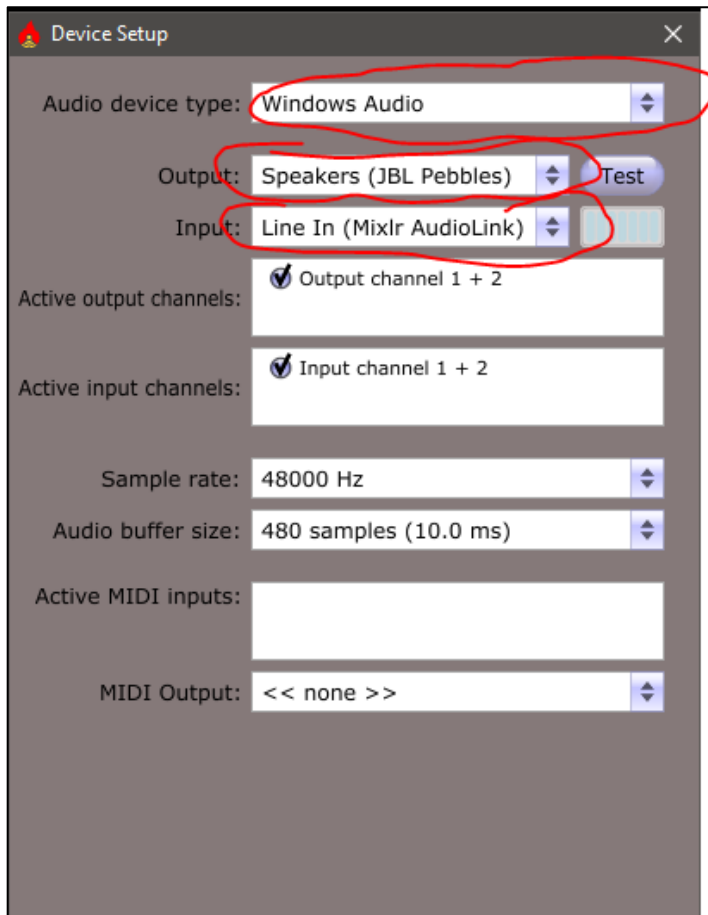
8. Same as before, right click or highlight each device in turn to get to the properties window. Set each device to **16 bit, 48000 Hz (DVD Quality)**.



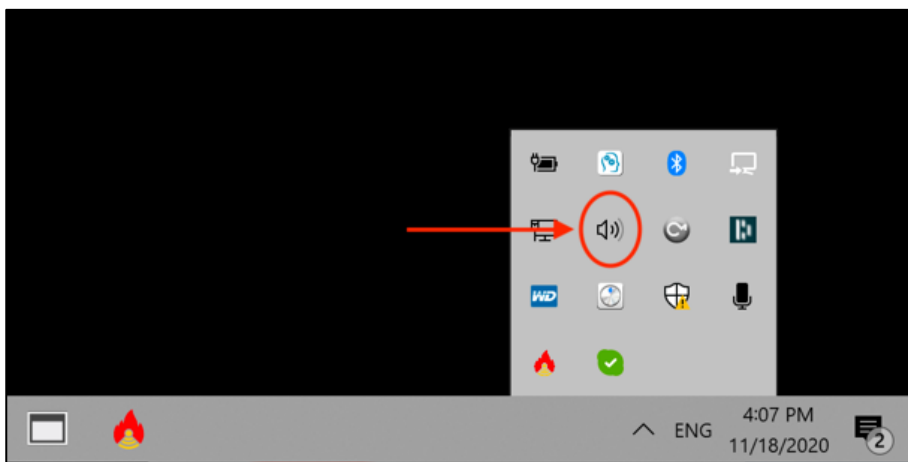
9. Now that all playback and recording sound devices are set to the same sample rate and bit depth, open the FireWav app by clicking the icon in the system tray and click **Setup**.



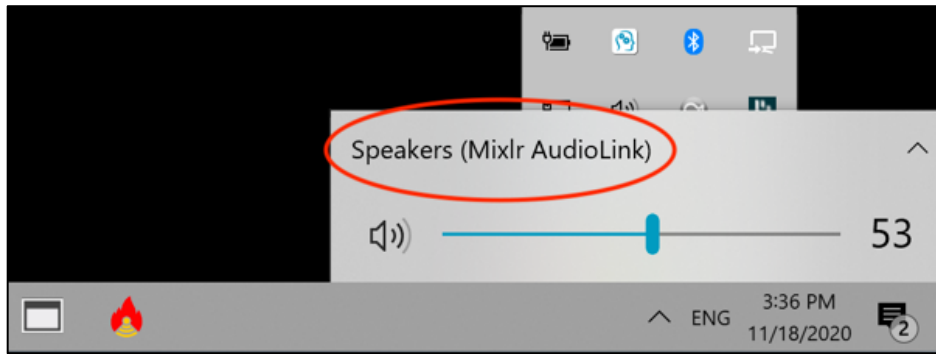
10. With the setup window open, the audio devices can be selected. Set audio device type (top) to “Windows Audio”. Using the pull down arrows, set the **Output** to the default playback sound device with the green check box next to it. Set the **Input** to the new recording device called Mixlr AudioLink



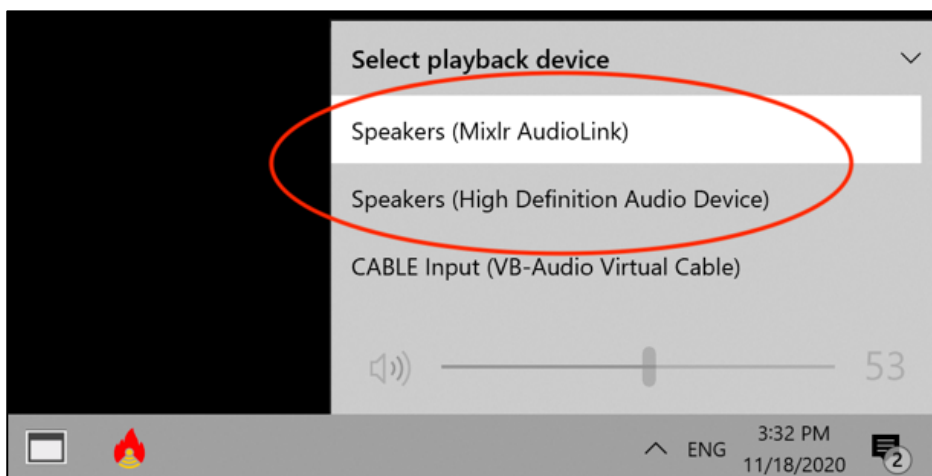
11. Close out of the sound control window.
12. The final step is to make sure the Mixlr audio driver is the playback device. Go to the system tray and click the speaker icon.



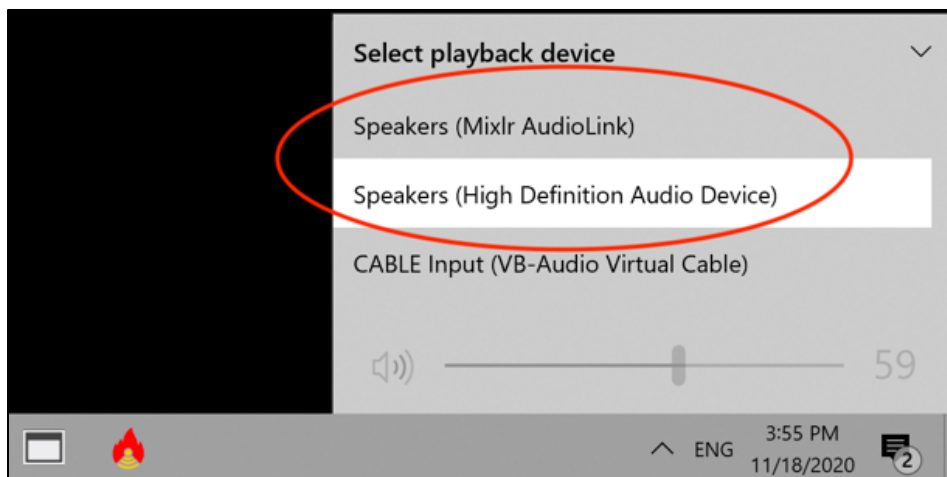
13. The Speakers (Mixlr AudioLink) indicates that FireWav is running and in the FireWav processing mode.



14. To see the other audio options (without FireWav processing), click the “up arrow” to the right of the Mixlr label and the panel will expand to show all the options.



15. Then click on the device name to reveal all the available device options. The audio device in service is highlighted in white. You can toggle between the computer sound system and the FireWav processing system as you choose. If FireWav is turned off, the computer system default will remain. If not already selected, click on Mixlr AudioLink to initiate FireWav processing.



16. Click on Mixlr, close the panel and enjoy!