



Quick Start Guide

The FireWav installer comes in a single .exe file called “**FireWav_Installer.exe**”. Download the file, double click and the installer will install the required operating elements (the FireWav app and Mixlr audio driver), and automatically set the Windows audio settings to match the FireWav requirements.

In addition to this Quick Start Guide, there are more detailed instructions in the:

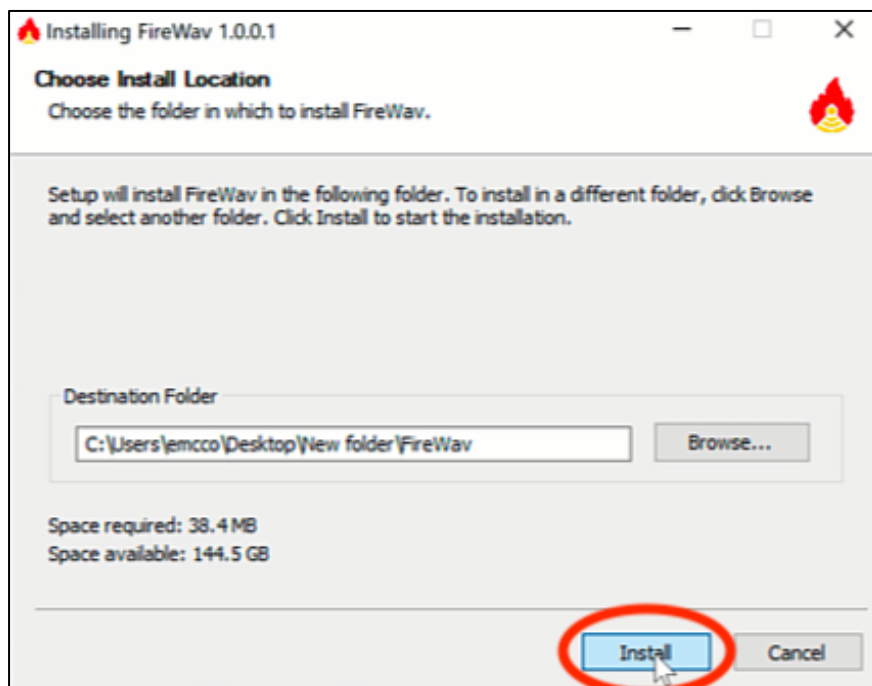
- Installation Guide
- License Management Guide
- Audio Driver Setup Guide

Located in the Support tab of the FireWav.com website.

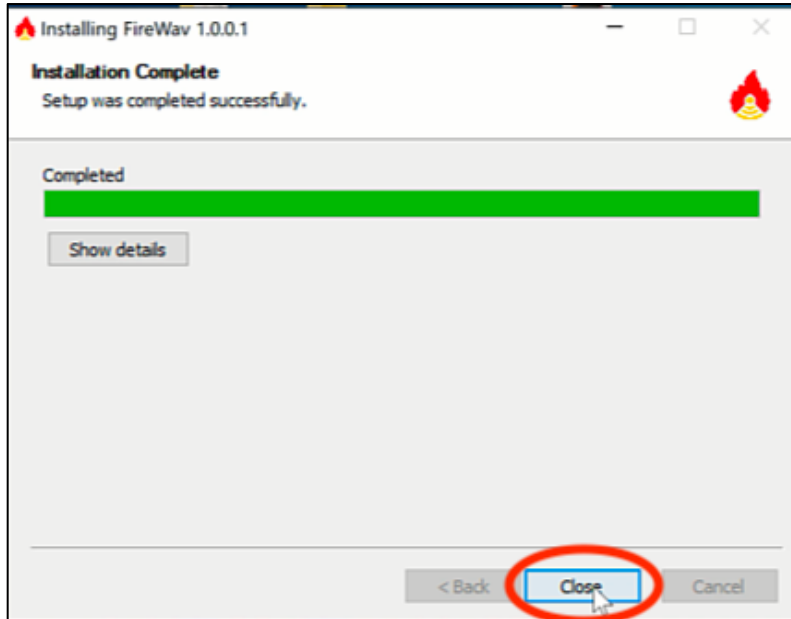
Installation & Operation

The process is automatic and fast.

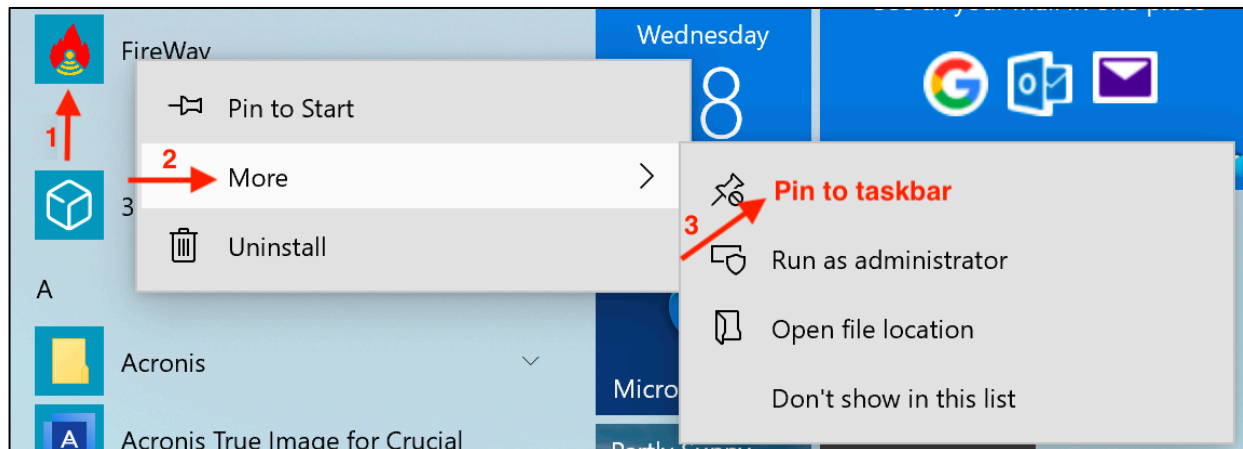
1. It begins with a screen to confirm the destination folder before FireWav begins to load. The default location is “**Program Files**”, but this example shows a new desktop folder. Confirm the correct location and **Click** “Install” to begin the process.



2. The progress screen reappears as the installation process comes to a finish. Click “Close” to finish the installation.



3. Find and Open **FireWav** in Explorer; or pin it to your Taskbar by right clicking the icon, selecting “More” and choosing “Pin to taskbar”.

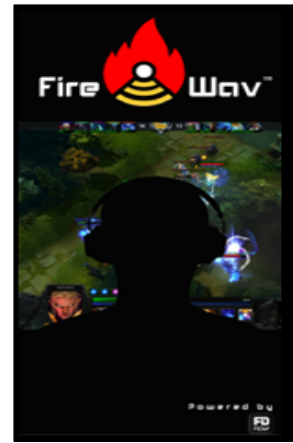


4. See the pinned FireWav icon in the task bar below. Click on the FireWav icon to start the app.

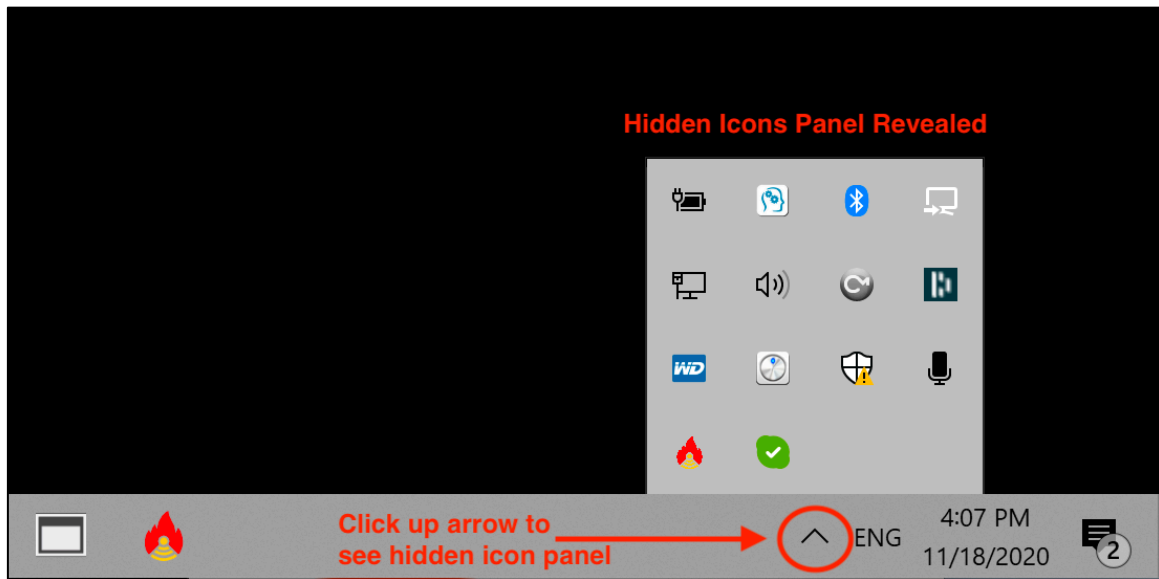


5. You will see the FireWav splash screen, which will then disappear.

The app will run in the background.



6. The open FireWav app can be viewed in the system tray.
Click on the **up arrow** to reveal the hidden icon panel.



7. **Left click** the FireWav icon to open the Setup panel.
Right click the FireWav icon and select "exit" to close the app.

